

Caleb Gruber

Lighting Design Portfolio

Lighting Designer & Electrician

Email: cgruber612@gmail.com

Mobile: (908) 873-2131



Portfolio Overview

Theatrical Lighting

- *Finding Nemo Jr.* (Lighting Designer)
- *Romeo and Juliet* (Assist. LD / Electrician)

Workshops / Other

- Workshop in Lighting Design, Studio School of Design (Student)

Paperwork

- SPFHS Repertory Theatre (Lighting Plot / LW Paperwork)

Personal Projects

- Halloween House Lighting

Theatrical Lighting

Finding Nemo Jr. | Terrill Middle School



In designing for *Finding Nemo Jr.*; the show posed a great challenge for me, the limited time to prepare, last minute rentals and having to design without calling holds or a formal cue to cue day. The majority of the show was programmed at home and edited live during rehearsals.

The scene depicted in the photo was a much calmer and more intimate scene between Nemo and his dad, Marlin. I was able to use moving lights rented to create moving texture on the walls of the space to give the underwater feel, and used specifically placed lights to direct the audience to stage right, highlighting the intimacy of the scene.

Theatrical Lighting

Romeo and Juliet | SPFHS Reparatory Theater

For *Romeo and Juliet*, I was tasked with assisting a hired LD and acted as the high schools electrician for the space. For this show, it was set in the 50's, putting a twist on the classic story. One of the directors visions was a diner that was pulled out onto stage with a neon sign. I was able to use Goviee light tape on the inside of the sign to animate it and provide a fun piece for the show. With more time, my goal would be to make the sign



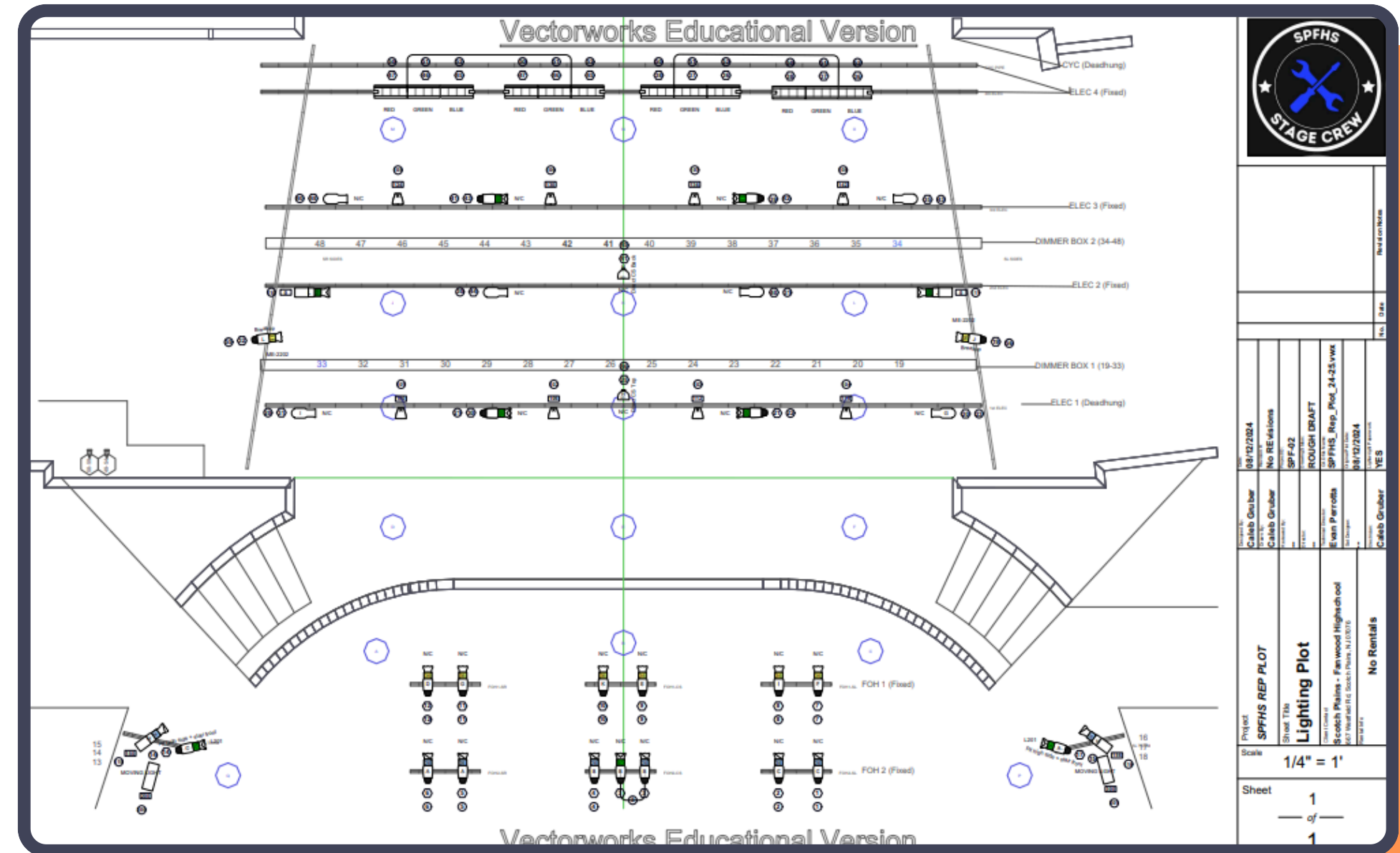


When participating in the Workshop for Lighting Design through the Studio School of Design in New York City, I was able to design along other high school students. The photo is from day 3, working with poems. The specific cue in the photo was cue 4, which was for the line “Despite the *breaking*.” Breaking was a key word in this design, the use of a red color to show a huge emotional change to possible anger, and the sharp gobo which resembled a shatter of glass.

Lighting Paperwork

Rep Lighting Plot | SPFHS Reparatory Theater

Other than design for the shows, I also set a goal for myself in creating a reparatory lighting plot for the school, as lighting post shows was very random and created extra work. I was able to self-learn Vectorworks and with some help from YouTube tutorials I designed the rep plot for the school. The plot features exact dimensions of the space with center and plaster lines, dimmer placement and guides. Along with the plot I learned Lightwright 6 and generated labels for the fixtures and other paperwork.



Personal Projects

Halloween House Lighting



In my free time I also was able to help decorate my house alongside my father for Halloween. The house has Philips Hue lights positioned in each window, under the porch, in accent lights, on the roof, and on the grass. Using the Philips Hue app I created a scheme of colors that I feel best carried across the Halloween feeling while also using specific lights to accent the sign in the grass, up light the gargoyles, and static candles to bring the scene to life and give it dimension. Working with scrim was a challenge, as balancing the light levels with projection was a test of trial and error.